

# CRAIGIE, DUNDONALD AND SYMINGTON PARISH CHURCH

## PARISH PROFILE

PSALMS 133:1 HOW GOOD AND PLEASANT IT IS  
WHEN GOD'S PEOPLE LIVE TOGETHER IN UNITY



## VISION STATEMENT

Our vision is focused on reaching out to serve others and taking a spiritual and prayer led approach for the benefit of the whole community, demonstrating the love of Christ for our World. A church that nurtures a deepening relationship with God through prayer and inspired worship, committed to encouraging its members to be involved in serving the community and spreading the word of Christ. A caring church that is a happy and safe environment for all, a warm and welcoming community that is united in Christ as well as being aware of the needs of, and caring for, the existing members.

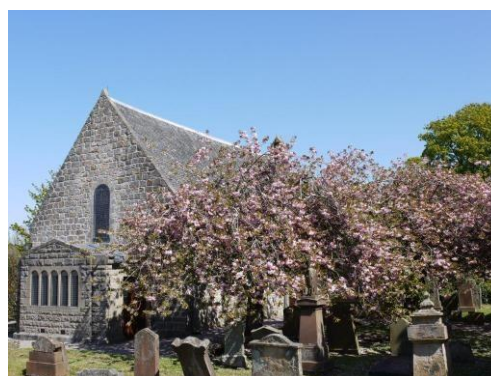
## INTRODUCTION

Following the recent unification of Craigie Symington and Dundonald Parish churches we are looking for someone to lead, inspire and challenge us through God's Word as we seek to serve and reach out, through our various activities and organisations, to the youth, families, elderly and all others living in this beautiful Ayrshire parish.



## OUR CHURCH

Craigie, Dundonald and Symington Parish is a rural parish which includes the villages of Craigie, Symington, Dundonald, Loans and the hamlets of Drybridge and Gatehead along with the surrounding farming establishments.



We have a Church roll of 596, 60% are active. The average Sunday attendance is between 30 and 50 at Symington Church and 60-90 at Dundonald Church, and our community shows strong support for services such as Remembrance Sunday and our BB enrolment service. Our Church has a Unitary Constitution, and we use a team structure, see Appendix A, to carry out the daily functions of the church. We have 45 Elders, of whom 42 are active. We employ a Church Officer and Cleaner in both churches and an Organist in Dundonald who is the Choir Master to the Dundonald Choir. Our Kirk Session, and volunteers working with vulnerable groups, have all been trained in Safeguarding.



The Church meets all of its Ministry and Mission and other financial obligations through various fund-raising activities. The annual income for 2024 across the parish was £165,000. Fund raising activities include a Summer Fete and a Christmas Fayre, Soup & Sandwich or Twospoon Lunches after Church Services, and Christian Aid events.



We have a small Youth Group and an energetic Sunday

School at Dundonald Church. At Christmas the Sunday School performs a nativity play and participates regularly in the services. A crèche is also available on a Sunday at the Dundonald service. The Social Action Committee host tea and coffee after Dundonald's service every Sunday and the Guild host tea and coffee on the first Sunday of the month at Craigie Symington.



1st Dundonald Boys' Brigade is a lively thriving company. The officers and boys always find time to support various fundraising efforts including raising money for a motorbike for the minister in our twinned Malawi Church.



The Guild meets for friendship and fellowship regularly between September and March. There are two groups - one in Dundonald and another in Symington. Both have a wide variety of speakers and entertainers. Their fundraising supports both Guild and local charities. The Dundonald group members organise the baking stall at the Church Fete and Christmas Fayre and an annual Coffee Morning in aid of Christian Aid. The Symington group members organise an annual Christian Aid breakfast, a Soup Lunch in aid of Poppy Scotland on Remembrance Sunday and they serve tea and coffee on the first Sunday of the month.

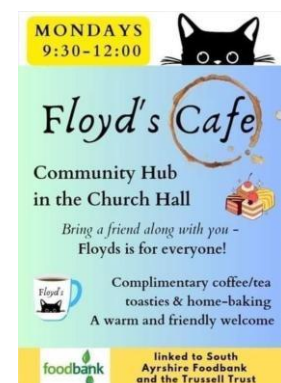


Dundonald Church is open on a Thursday 1300 – 1400 hrs for either personal prayer in the church or to join in a time of prayer and reflection run by a small, but dedicated group of prayers in the session room.



The Friendship Group meets weekly in Symington Community Hall. The group seeks to encourage friendship over tea and snacks and to help alleviate the feeling of isolation and loneliness.

Floyd's Community Café is also held in Dundonald Church Hall every Monday, offering a warm space, company, food and a sign-posting service to the local community. Floyd's works in partnership with South Ayrshire Council with the South Ayrshire Food Bank running out of Floyd's, and Council workers regularly attend to offer information and advice to the community.



The church has a compassionate Pastoral Care team who assist the Minister with home visits to the elderly and infirm, both in their own homes and in the various Sheltered Units and Nursing Homes in the area. Being a village environment there is a high level of ad hoc visiting by Elders and neighbours in general. Volunteer drivers help bring elderly or infirm members to Church each week.

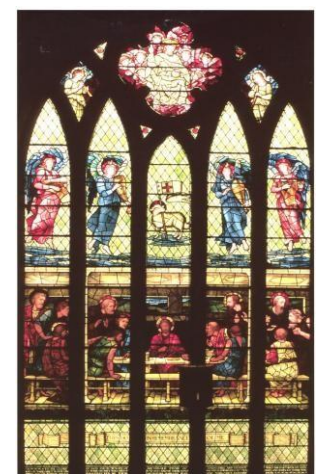
The church is part of the Covenant of Partnership between the Presbytery of the South West and Bandawe and Limphasa Presbyteries and is linked with Mdyaka Church in Malawi. We raise money each year through the Church Fete/Fayre for the 'Nursery Feeding Programme'.

Other organisations within the church

- Guild
- Men's Club
- Banner Group
- Decoration Group
- 2 House Groups
- Badminton Club
- Rainbows, Brownies and Guides

## FABRIC

Craigie Symington church is a Norman church and was founded in 1160AD by a local landowner Symon Loccard. It is understood that the village and church derived their name from him (originally Symonstown). His remains are believed to be buried under the chancel area. The Church is believed to be the only 12<sup>th</sup> Century Church in the West of Scotland still in use and is named in the top ten most beautiful Churches in Scotland. Under the three Norman arches in the East Wall are a series of three stained glass windows which depict "The Nativity", "The Crucifixion" and "The Ascension". The Organ is a modern electronic organ and is situated in the upper Gallery. Alongside the organ is the new audio-visual system which includes a HD screen and loop system which allows the services to be recorded. The Church was granted grade A listing in 1994.



In Symington, the village hall is the Community Hall and is leased from the Church of Scotland on a twenty-year agreement due to expire in January 2027. It is run by a small team of voluntary Trustees and we employ a caretaker. We actively fundraise e.g. fashion show, drama night and cheese and wine events. We have a loop system and disabled parking. The hall is well used by a wide range of people. Activities include: Pilates, indoor bowling, yoga, Sunday Club, Friendship Group, Bridge Club, Art Group, Karate, Community Council, village consultation events, sound bath, birthday parties and wedding receptions.



Dundonald Church is a grade B listed building seating around 400. It was constructed in 1803 and has a steeple that houses a 3-faced clock which chimes on the hour and the bell is rung as a call for worship on a Sunday. The first Church on this site was around 1221, however, the village has had a church presence since around 500AD. The Church has a well-maintained pipe organ and contains several beautiful Pre-Raphaelite stained glass windows including a unique chancel window featuring Henry Dearle's Last Supper. There is a small vestry/office and session room. We have a Tech Team who operate the sound and video desk allowing services to be live streamed and recorded for Dundonald's services every Sunday. We have a



well-used large hall which contains a kitchen, toilets and storage. The Hall is used for Church fundraising and social events, Floyd's Cafe and Community groups including Rainbows, Brownies, Guides, yoga, the Badminton Club, Men's Club, and birthday parties.



The Manse is close to Dundonald church with beautiful views over the countryside. It consists of 4 bedrooms, 2 public rooms, 1 family sitting room, study, bathroom, WC, kitchen, 2 outhouses, garage, large driveway and garden. It has recently been refurbished, which was financed through the fundraising efforts of the congregation.



## SERVICES

- Every week we have two worship services. The first is at 9:30am in Craigie Symington Church. The second is at 11am in Dundonald Church with the children attending at the beginning before going to church hall for age related bible study.
- Christmas Eve service
- Christmas Day service
- Mothering Sunday
- Good Friday service
- Easter Sunrise Service held at Dundonald Castle
- Easter Sunday
- Holy Communion services throughout the year
- Harvest Thanksgiving
- Boys' Brigade Dedication Service
- Remembrance Sunday
- 2 short services a month at Dundonald Nursing Home
- Monthly evening service
- Silver Services and Return to Church Services
- School Services

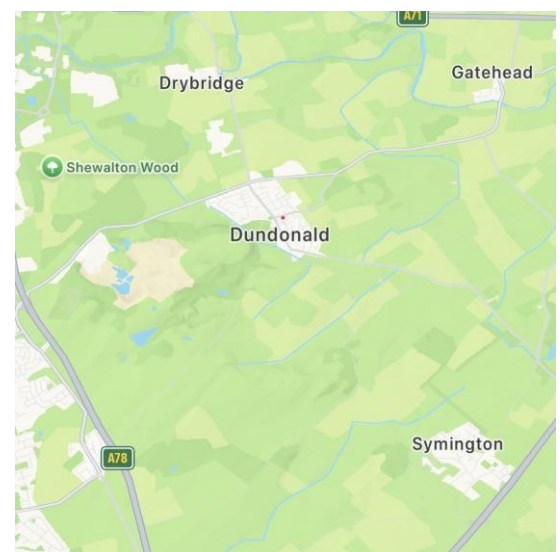
The Church has both a website and a social media presence (Facebook) through which we get requests for historical and family history information from all over the world. Our excellent Church Magazine is also available on the website and via Facebook with hard copies delivered by elders to those who cannot access it online.

## PARISH

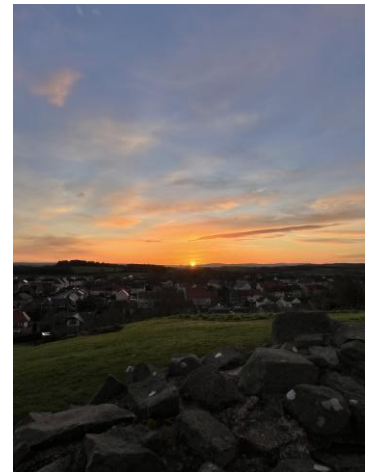
Craigie, Dundonald and Symington Parish is situated within South Ayrshire, and is close to Kilmarnock, Troon, Irvine and Ayr. Glasgow is about 30 minutes via the M77 and Prestwick Airport 10 minutes.

### Amenities in Dundonald

- Primary School and Early Years Centre (local secondary school is Marr College in Troon)
- Sports Hall



- 2 popular restaurant/bars
- 2 small general shops
- 2 hairdressers
- Medical practice
- Pharmacy
- Veterinary practice
- 14th century castle and visitors centre with cafe
- Bowling green
- Skate park
- Football pitch
- Sheltered Housing Unit
- Nursing home
- Garden Centre with cafe



### Amenities in Symington

- Primary School and Early Years Centre (local secondary school is Prestwick Academy)
- Village Hall
- Popular restaurant
- Pharmacy
- Medical Practice
- Tennis Courts
- Library
- Bowling Green
- 3 General stores
- Lottery funded multi-use games area
- 5 aside football pitch
- Netball and basketball pitches
- Small gymnasium



### Amenities in CRAIGIE

- Village Hall owned by the Community

### RECREATIONAL FACILITIES

There are many clubs and organisations within the villages. These include; a Gardening Club, Burns Club, Historic and Archive Group, Craft Club, Ramblers, Bowling Club, Young Farmers' Club, Women's Rural Institute, Curling Club, Rifle Range, Football Club and Friends of Dundonald Castle.



Every year the volunteer Trustees of Spark- Symington Park host a free village barbeque and run a range of taster sporting events to remind everyone of the free facilities available to them throughout the year. Symington also hosts a Family Fun Gala Day boasting a wide range of stalls, food vendors, inflatables, classic car display, beer garden (provided by our local Bowling Club), all day DJ, teas and coffees and much more. It is always well attended regardless of the weather.



Dundonald village annually hosts a traditional Highland Games ([www.Dundonald-games.org.uk](http://www.Dundonald-games.org.uk)) which includes Pipe Band contests with international entrants, Highland dancing, heavy events lots and a wide variety of local stalls. The annual Dundonald 10k race from Dundonald to Symington and back is part of the many Dundonald Highland Games week celebrations. There is also the Dundonald village Christmas Lights switch-on at the beginning of December which is well attended come rain or shine.



In August the annual Craigie Agricultural Show is held at Langholm Farm, Symington. This is a great family day out with food, entertainment, equestrian and farm animal competitions.



Several excellent and some famous links golf courses (both municipal and private) can be found within a short distance from the villages. These include Royal Troon and Dundonald Links. Swimming pools are available in Troon, Kilmarnock, Irvine and Ayr. The historic "Smugglers' Trail" footpath which leads over the hill from Dundonald towards Loans offers spectacular views of the Firth of Clyde and the local wooded areas provide various walks and the chance to see roe deer, foxes, badgers and squirrels. Nearby, the "Shewalton Ponds" conservation area is excellent for relaxing walks or cycling and is suitable for all ages, while the nearby beaches of Troon, Barassie and Irvine Park provide excellent coastal walks.



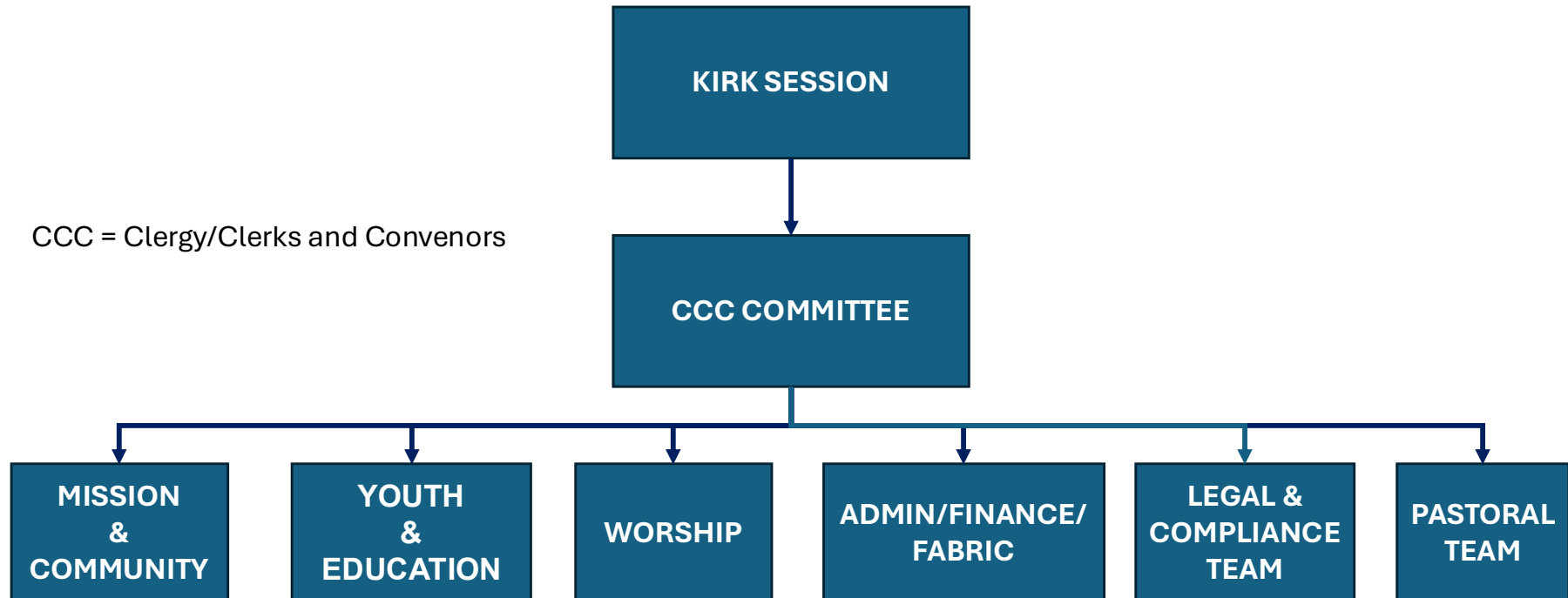
The Kirk Session has decided, by a substantial majority, to depart from the traditional position of the Church in regard to Ministers in civil partnerships and same sex marriages. Thus, the post is open to all Ministers of Word and Sacrament as well as those Candidates in Training searching for their first Charge.



#### WE ARE LOOKING FOR IN A MINISTER WHO:

1. Has a deep faith in Christ, with a passion for preaching God's word and who will encourage spiritual growth.
2. Is open-minded, with vision and imagination with a willingness to explore new forms of worship and who unafraid to tackle the challenges of apathy in this modern day.
3. Has strong communication skills with an ability to relate to people of all ages and in all situations.
4. Will be a good friend to the elderly in the congregation.
5. Has a desire to get involved with the young people of our Church and villages and be keen and enthusiastic in continuing school chaplaincy opportunities.
6. Is a team player with willingness to include others in the day-to-day running of the Church.
7. Will support and inspire the Kirk Session in their service and work.
8. Is someone who is happy to be involved in the Presbytery of the Southwest, develop a good relationship with other local churches and local schools.
9. Is resilient.
10. Has a good sense of humour.

# CDS TEAM STRUCTURE



**MISSION  
&  
COMMUNITY**

Community Outreach  
Pie, a Pint and Parable  
Contact Magazine  
Malawi Projects  
Mission Partners  
Floyds & Foodbank  
Social Events  
Social Media  
Fetes/Galas  
Fundraising Events  
Summer Mission

**YOUTH  
&  
EDUCATION**

Sunday School  
Summer Club  
Boys' Brigade  
School Liaison  
Creche  
Bible Class  
Holiday Club  
Adult Education  
Elder Education

**WORSHIP**

Ministry  
Alternative Forms of Worship  
Special Services  
House Groups  
Home Communions  
Prayer Group  
Bible Study Group  
Choir  
Readers  
Flower Ministry  
Decoration & Banners  
Sound

**LEGAL & COMPLIANCE**

Safeguarding  
PVG  
ECO Church  
OSCR

**ADMIN/FINANCE/  
FABRIC**

Roll Matters  
Fabric  
Finance  
Investments  
Grants  
Presbytery Elder

**PASTORAL  
TEAM**

Home Visiting  
Hospital Visits  
Nursing Homes  
Hansel Village